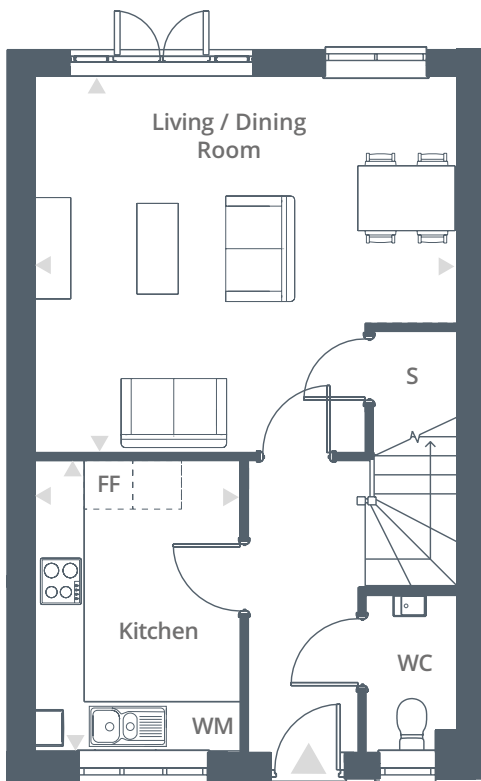


3 Bedroom House

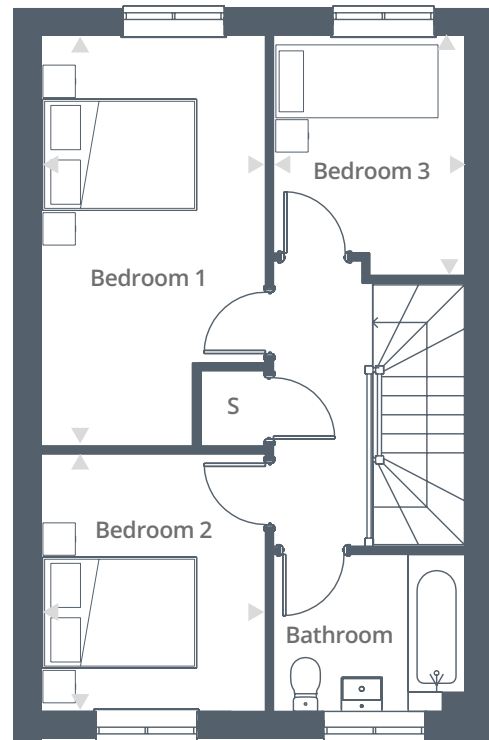
Plot 7 | 7 Brambles Avenue, Harlington, Bedfordshire, LU5 6UG



FRONT ELEVATION



GROUND FLOOR



FIRST FLOOR

Dimensions

Living / Dining Room	5.28m x 4.68m	17' 4" x 15' 4"
Kitchen	3.64m x 2.55m	11' 11" x 8' 4"
Bedroom 1	5.10m x 2.80m	16' 9" x 9' 2"
Bedroom 2	3.21m x 2.80m	10' 6" x 9' 2"
Bedroom 3	3.00m x 2.40m	9' 10" x 7' 10"

Total Area 87 m² / 936 ft²